

**RUSH
WITT &
WILSON**



**5 Diana Close, Bexhill-On-Sea, East Sussex TN40 2RW
£395,000**

No onwards chain ! A well presented extended three bedroom detached house with far reaching views, two reception rooms, gas central heating system, double glazed windows and doors, downstairs cloakroom, modern kitchen and bathroom, private front and landscaped rear garden, extensive off road parking, detached garage. Viewing comes highly recommended by RWW sole agents. Council Tax Band D.



Entrance Hall

Obscured glass window to the front elevation with entrance door, parquet flooring, single radiator.

Cloakroom

Obscured glass window to the side elevation, corner wash hand basin with tiled splashback, wc with low level flush, tiled floor.

Living Room

25'2 x 13'8 (7.67m x 4.17m)

Two double radiator, French doors and windows overlook the rear elevation, large picture window to the front with far reaching views, parquet flooring, fireplace with real flame gas coal effect fire.

Dining Room

11'7 x 10'1 (3.53m x 3.07m)

Windows to front, side and rear elevations with patio doors, double radiator, laminate wood flooring.

Kitchen

10'10 x 10'6 (3.30m x 3.20m)

Window to the rear elevation, door to side, fitted kitchen comprising a range of base and wall units with laminate straight edge worktops, single drainer sink unit with mixer tap, plumbing for washing machine, integrated dishwasher, integrated AEG oven and grill with gas hob, space for fridge/freezer, extractor canopy and light, built in storage cupboard, tiled floor.

First Floor Landing

Window to the side elevation, access to roof space.

Bedroom One

12' x 11'8 (3.66m x 3.56m)

Window to the front and side elevations with far reaching views, single radiator, built in wardrobe cupboard.

Bedroom Two

12'2 x 11'2 (3.71m x 3.40m)

Window to the rear elevation, single radiator, built in wardrobe cupboard.

Bedroom Three

8'7 x 8'3 (2.62m x 2.51m)

Window to the front elevation, single radiator, built in wardrobe cupboard.

Bathroom

Modern suite comprising wall mounted wash hand basin with vanity unit and drawers beneath, wc with low level flush, walk in shower with chrome fixed showerhead and hand/shower attachment, aqua board splashbacks, tiled floor, wall mounted chrome heated towel rail, electric shaver point with light.

Outside**Front Garden**

Mainly laid to lawn, elevated position with stunning views, neatly planted flower and shrub beds with some small trees, retaining walls, raised flowerbeds, side access, extensive off road parking is available on long driveway which leads to garage.

Rear Garden

Landscaped with low maintenance in mind, lawned area, pergola and central patio areas, additional patio area to the rear of the garden, all enclosed with fencing to all sides, shrubbery and some trees.

Detached Garage

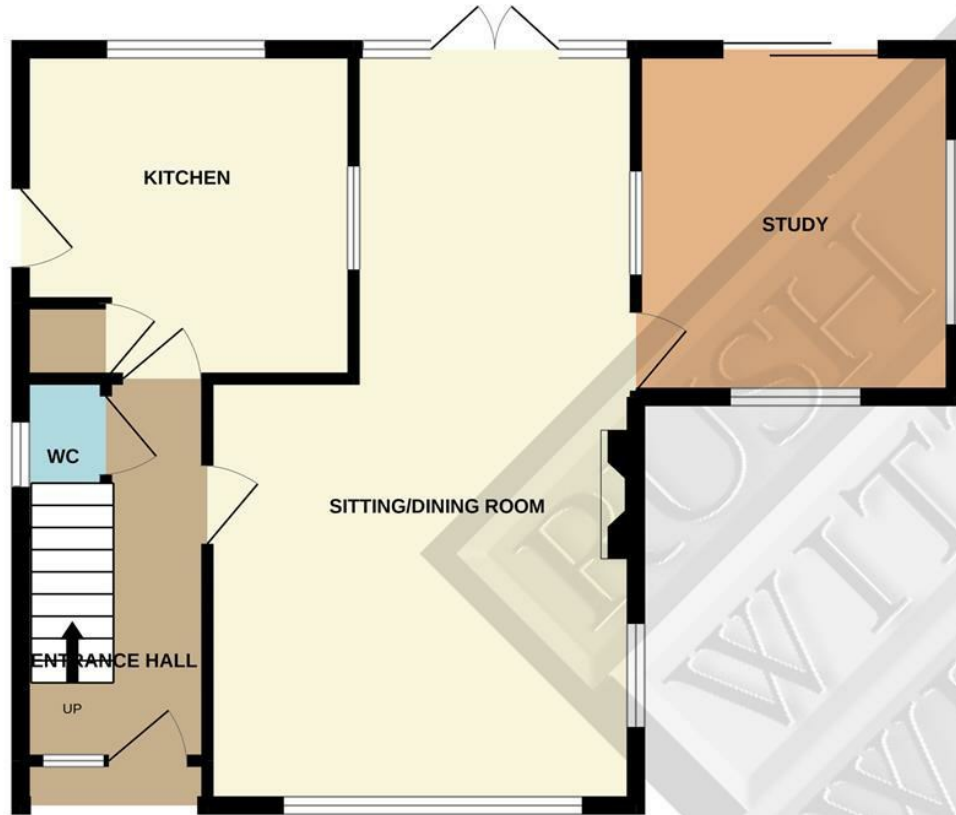
Single garage with up and over door, power and light, window to the side elevation, personal door to side.

Agents Note

None of the services or appliances mentioned in these sale particulars have been tested. It should also be noted that measurements quoted are given for guidance only and are approximate and should not be relied upon for any other purpose.



GROUND FLOOR
583 sq.ft. (54.2 sq.m.) approx.

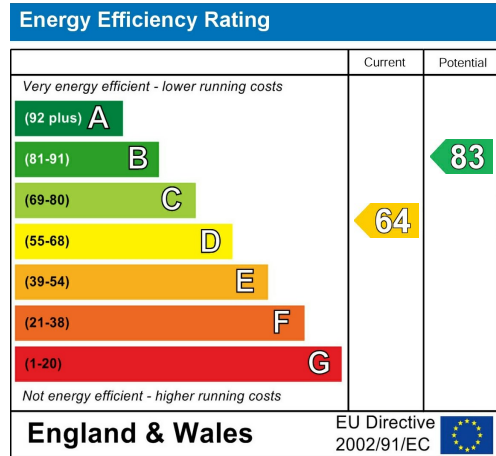
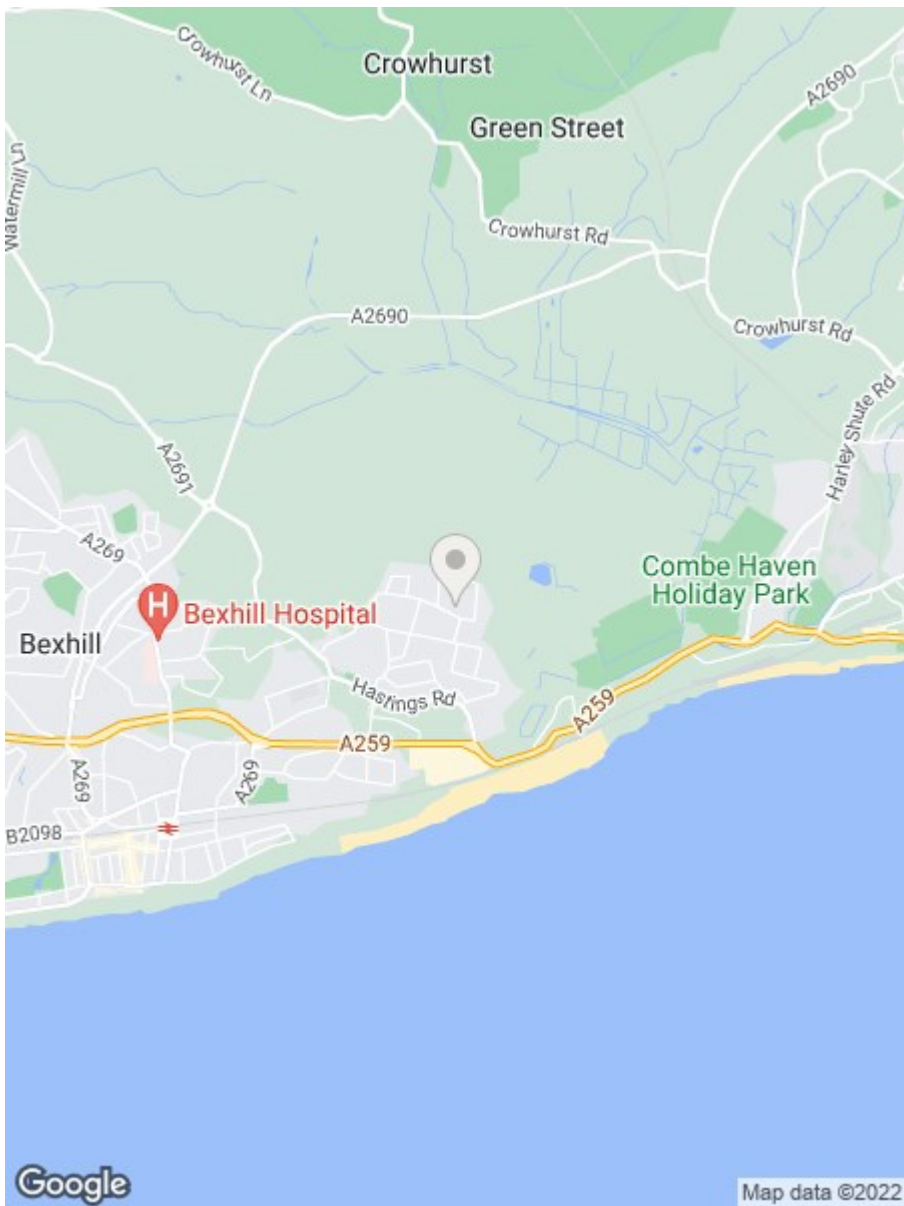


1ST FLOOR
474 sq.ft. (44.0 sq.m.) approx.



TOTAL FLOOR AREA : 1057 sq.ft. (98.2 sq.m.) approx.

Whilst every attempt has been made to ensure the accuracy of the floorplan contained here, measurements of doors, windows, rooms and any other items are approximate and no responsibility is taken for any error, omission or mis-statement. This plan is for illustrative purposes only and should be used as such by any prospective purchaser. The services, systems and appliances shown have not been tested and no guarantee as to their operability or efficiency can be given.
Made with Metropix ©2022



**RUSH
WITT &
WILSON**

**Residential Estate Agents
Lettings & Property Management**



**3 Devonshire Road
Bexhill-on-Sea
East Sussex
TN40 1AH
Tel: 01424 225588
bexhill@rushwittwilson.co.uk
www.rushwittwilson.co.uk**